

Workfile Satellite Context Exhibit

CropLens sample for Rural appraisers

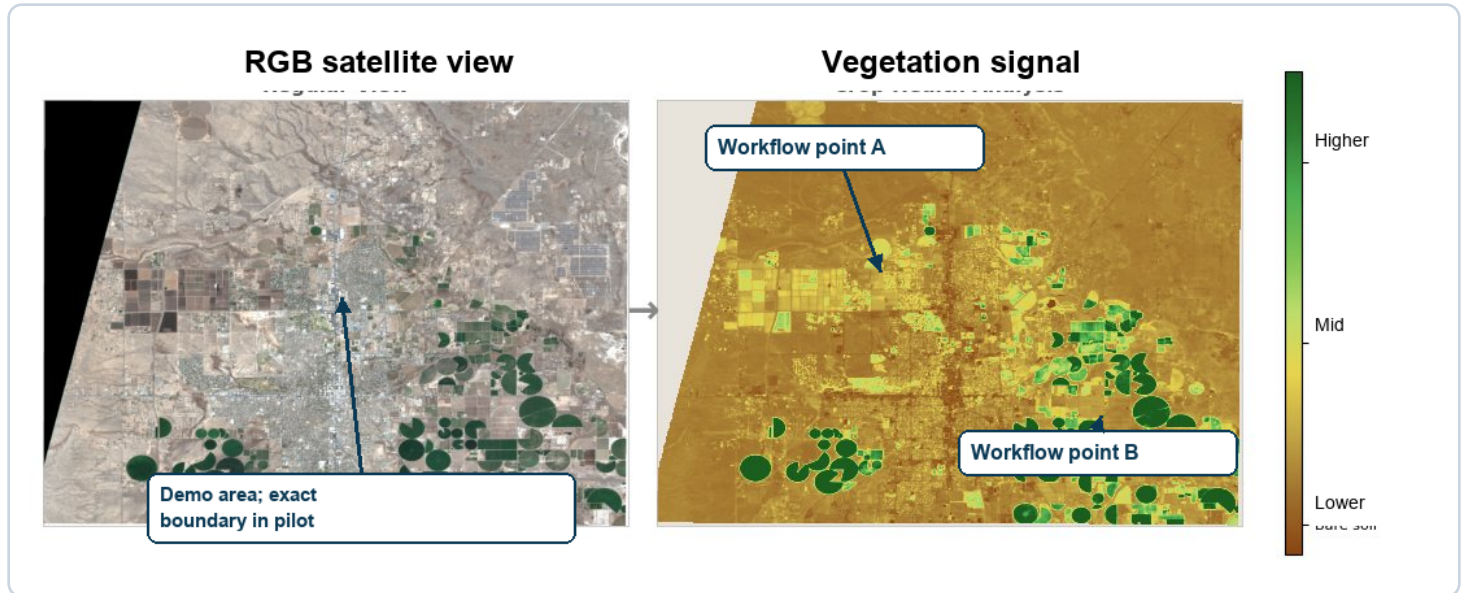
One-page workflow sample

Visual: Roswell NM variability workflow sample

Source/date/boundary-limited context for appraiser-controlled review.

Main takeaway: this is a factual workfile exhibit only; the appraiser controls scope, relevance, use, and exclusion.

Field Roswell NM farmland area - workflow example	Signal Mixed vegetation signal	Date Sentinel-2 visual: 2026-03-25	Boundary Demo area; paid pilot uses exact boundary
-------------------------------------------------------------	------------------------------------------	----------------------------------------------	--------------------------------------------------------------



Observed patterns

- Source/date/boundary notes define what the exhibit can and cannot show.
- Visible patterns are observations and questions, not conclusions.
- Reason to exclude is explicit if scope, boundary, or source quality is not sufficient.

Questions to check

- Scope check: is this factual exhibit appropriate for workfile research only?
- Source check: are parcel data, boundary, and image date clear enough?
- Exclude if: source, boundary, or relevance is not sufficient under the appraiser's scope.

How to use this

- Use only as workfile research if it fits the appraiser's scope.
- Keep the appraiser responsible for relevance, use, and exclusion.
- Attach source/date/boundary confidence notes so the exhibit stays factual and limited.

Workfile exhibit includes

- Source/date/boundary confidence notes.
- Factual observations and questions only.
- Reason-to-exclude note if scope/source quality is not sufficient.

Guardrail: Appraiser-controlled workfile research only; not valuation support, appraisal analysis, or value conclusion.

Limits

Demo sample only. Shows satellite-visible factual context for further review. Must not be used as valuation support, appraisal analysis, highest-and-best-use support, value conclusion, or price support.