

Pre-Scout Stop List

CropLens sample for Ag consultants

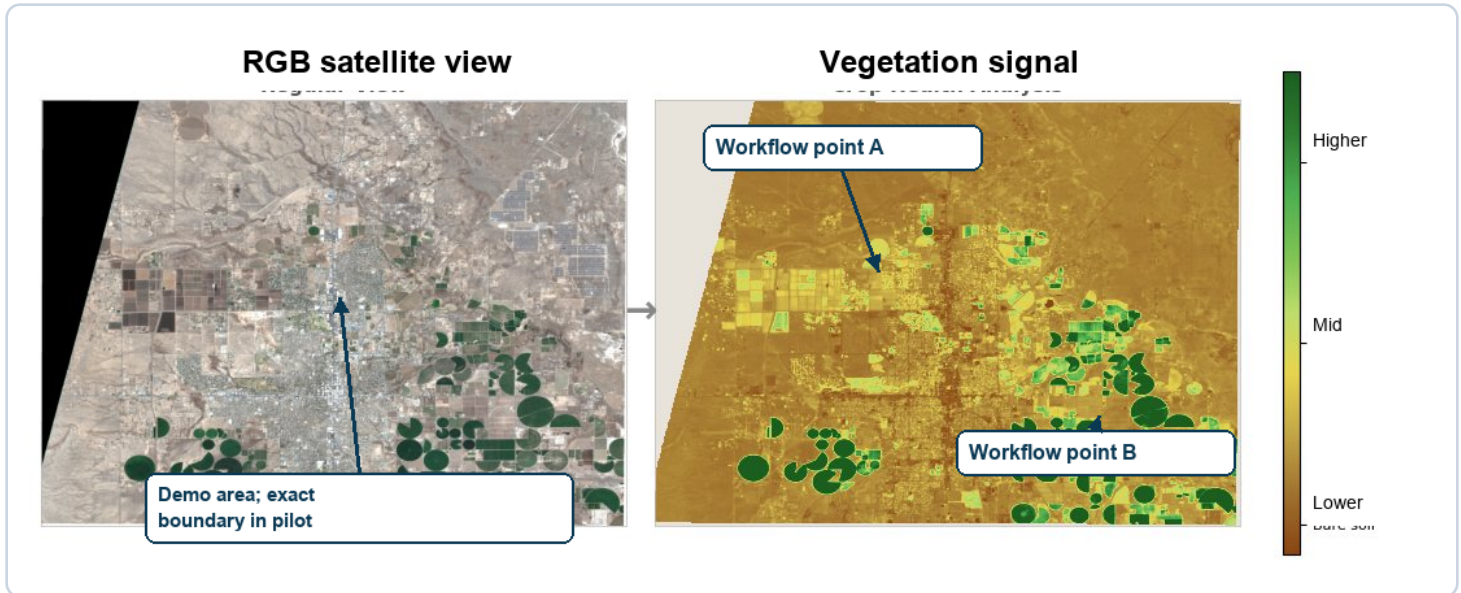
One-page workflow sample

Visual: Roswell NM variability workflow sample

A prep sheet for choosing the first scouting stops before walking the field.

Main takeaway: use this as a stop list and field-note prompt; final agronomic interpretation stays with the consultant.

Field Roswell NM farmland area - workflow example	Signal Mixed vegetation signal	Date Sentinel-2 visual: 2026-03-25	Boundary Demo area; paid pilot uses exact boundary
---	--	--	--



Observed patterns

- The visual shows zones worth comparing on the ground.
- Each stop is a field-note prompt, not a cause or diagnosis.
- The consultant keeps the agronomic interpretation.

Questions to check

- Scout stop 1: what should be photographed or compared first?
- Scout stop 2: what crop-stage, irrigation, or planting context is needed?
- Scout stop 3: what client/operator context is needed before any interpretation?

How to use this

- Use before a field visit to choose the first stops.
- Compare each stop with crop stage, planting date, irrigation, and local context.
- Use it as overflow prep material, not agronomic diagnosis.

Pre-scout stop list includes

- 3-5 stop IDs/zones to compare on the ground.
- Photo notes and crop-context prompts.
- Prep-only wording: no diagnosis or input recommendation.

Guardrail: Do not recommend inputs, diagnose disease, or tell the consultant how to farm; this is a prep stop list.

Limits

Demo sample only. Shows satellite-visible zones for scouting prep. Not agronomic diagnosis, cause analysis, input recommendation, or yield forecast. Final interpretation requires local crop context.